

## Chemical analysis report

<b>Customer</b>	Hilma Biocare
<b>Sample:</b>	
<b>- accepted</b>	February 6, 2018
<b>- completed</b>	February 11, 2018
<b>- name</b>	M.6250
<b>- batch</b>	N/A
<b>- appearance</b>	Colorless oil
<b>- amount</b>	1 vial

<b>Analysis:</b>	<b>Method</b>	<b>Result</b>
<b>Identification</b>	GC/FID	<u>Testosterone Propionate</u> <u>Testosterone Phenylpropionate</u> <u>Testosterone Isocaproate</u> <u>Testosterone Decanoate</u> <u>(Benzyl Alcohol, Benzyl Benzoate)</u>
<b>Assay</b>	RP-HPLC/DAD	TP: 31.4 mg/mL TPH: 63.5 mg/mL TIC: 59.3 mg/mL TD: 100.3 mg/mL

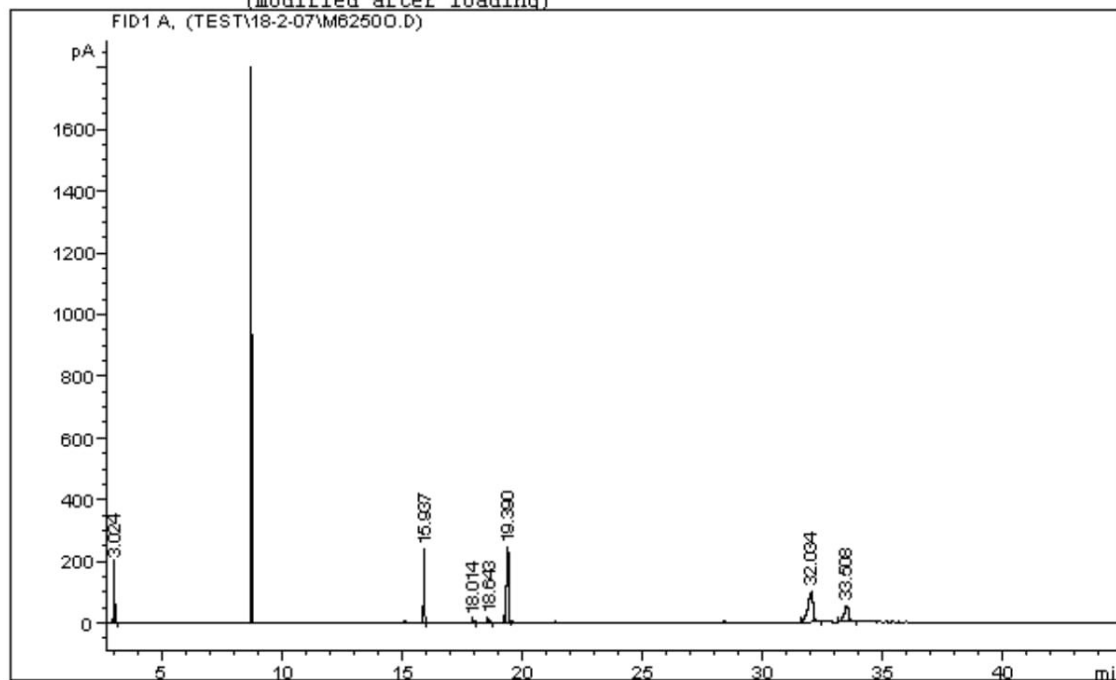
# GC/FID Analysis:

Data File C:\HPCHEM\1\DATA\TEST\18-2-07\M62500.D

Sample Name: M.6250 0

```

=====
Injection Date : 7.2.2018 12:47:23 odp.
Sample Name    : M.6250 0
Acq. Operator  :                               Location : Vial 4
Acq. Instrument : Instrument 1                  Inj       : 1
Acq. Method    : C:\HPCHEM\1\METHODS\TEST.M  Inj Volume: 1 µl
Last changed   : 7.2.2018 12:43:28 odp.
                (modified after loading)
Analysis Method : C:\HPCHEM\1\METHODS\TEST.M
Last changed   : 9.2.2018 8:32:26 odp.
                (modified after loading)
    
```



## Area Percent Report

```

=====
Sorted By      : Signal
Multiplier     : 1.0000
Dilution       : 1.0000
Use Multiplier & Dilution Factor with ISTDs
    
```

Signal 1: FID1 A,

Peak #	RetTime [min]	Type	Width [min]	Area [pA*s]	Height [pA]	Area %
1	3.024	PB	0.0324	378.14771	194.70595	8.85418
2	15.937	BB	0.0425	602.83490	230.29568	14.11514
3	18.014	PP	0.0634	16.59149	4.08571	0.38848
4	18.643	BB	0.0662	29.92109	6.95256	0.70059
5	19.390	BB	0.0750	1207.65344	238.85341	28.27673
6	32.034	BB	0.1976	1353.32178	95.32444	31.68750
7	33.508	PB	0.2007	682.36725	50.78820	15.97736

Totals : 4270.83766 821.00595

Results obtained with enhanced integrator!

\*\*\* End of Report \*\*\*

**RP-HPLC/DAD Analysis:**

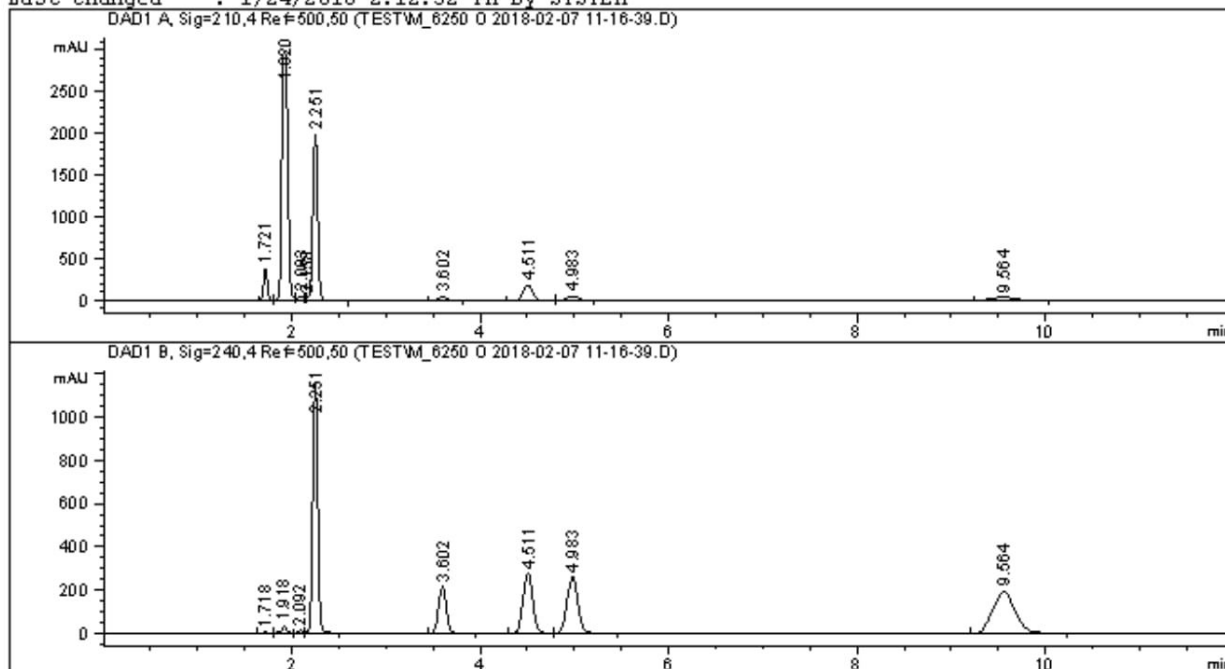
Data File C:\CHEM32\1\DATA\TEST\M\_6250 0 2018-02-07 11-16-39.D

Sample Name: M.6250 0

```

=====
Acq. Operator   : SYSTEM
Sample Operator : SYSTEM
Acq. Instrument : 1260                      Location : P1-F-04
Injection Date  : 2/7/2018 11:17:11 AM
                                           Inj Volume : 1.000 µl

Acq. Method     : C:\CHEM32\1\METHODS\TEST.M
Last changed    : 2/7/2018 11:05:25 AM by SYSTEM
                 (modified after loading)
Analysis Method : C:\CHEM32\1\METHODS\TEST.M
Last changed    : 1/24/2018 2:12:32 PM by SYSTEM
    
```



=====  
**Area Percent Report**  
 =====

```

Sorted By      :      Signal
Multiplier     :      1.0000
Dilution       :      1.0000
Do not use Multiplier & Dilution Factor with ISTDs
    
```

Signal 1: DAD1 A, Sig=210,4 Ref=500,50

Peak #	RetTime [min]	Type	Width [min]	Area [mAU*s]	Height [mAU]	Area %
1	1.721	BB	0.0423	1028.76477	383.73453	4.1840
2	1.920	BV	0.0733	1.34206e4	2992.21216	54.5821
3	2.093	VV	0.0614	182.09686	43.88721	0.7406
4	2.158	VV	0.0264	53.38276	30.52292	0.2171
5	2.251	VB	0.0579	7289.18848	1980.81824	29.6453
6	3.602	BB	0.0926	253.39697	44.41926	1.0306
7	4.511	BB	0.1175	1294.12659	178.76299	5.2632
8	4.983	BB	0.1297	428.41434	53.92158	1.7424
9	9.564	BB	0.2308	637.98706	40.50068	2.5947

Totals :                      2.45880e4  5748.77955

Signal 2: DAD1 B, Sig=240,4 Ref=500,50

Peak #	RetTime [min]	Type	Width [min]	Area [mAU*s]	Height [mAU]	Area %
1	1.718	BB	0.0493	11.52288	3.70395	0.0899
2	1.918	BV	0.0540	116.74434	32.43203	0.9104
3	2.092	VV	0.0558	43.01990	11.99959	0.3355
4	2.251	VB	0.0606	4328.57373	1159.29700	33.7569
5	3.602	BB	0.0926	1216.40942	212.93445	9.4863
6	4.511	BB	0.1174	1974.03723	272.82452	15.3947
7	4.983	BB	0.1303	2066.34644	258.47235	16.1146
8	9.564	BB	0.2304	3066.14404	193.96875	23.9117

Totals : 1.28228e4 2145.63265

=====  
\*\*\* End of Report \*\*\*